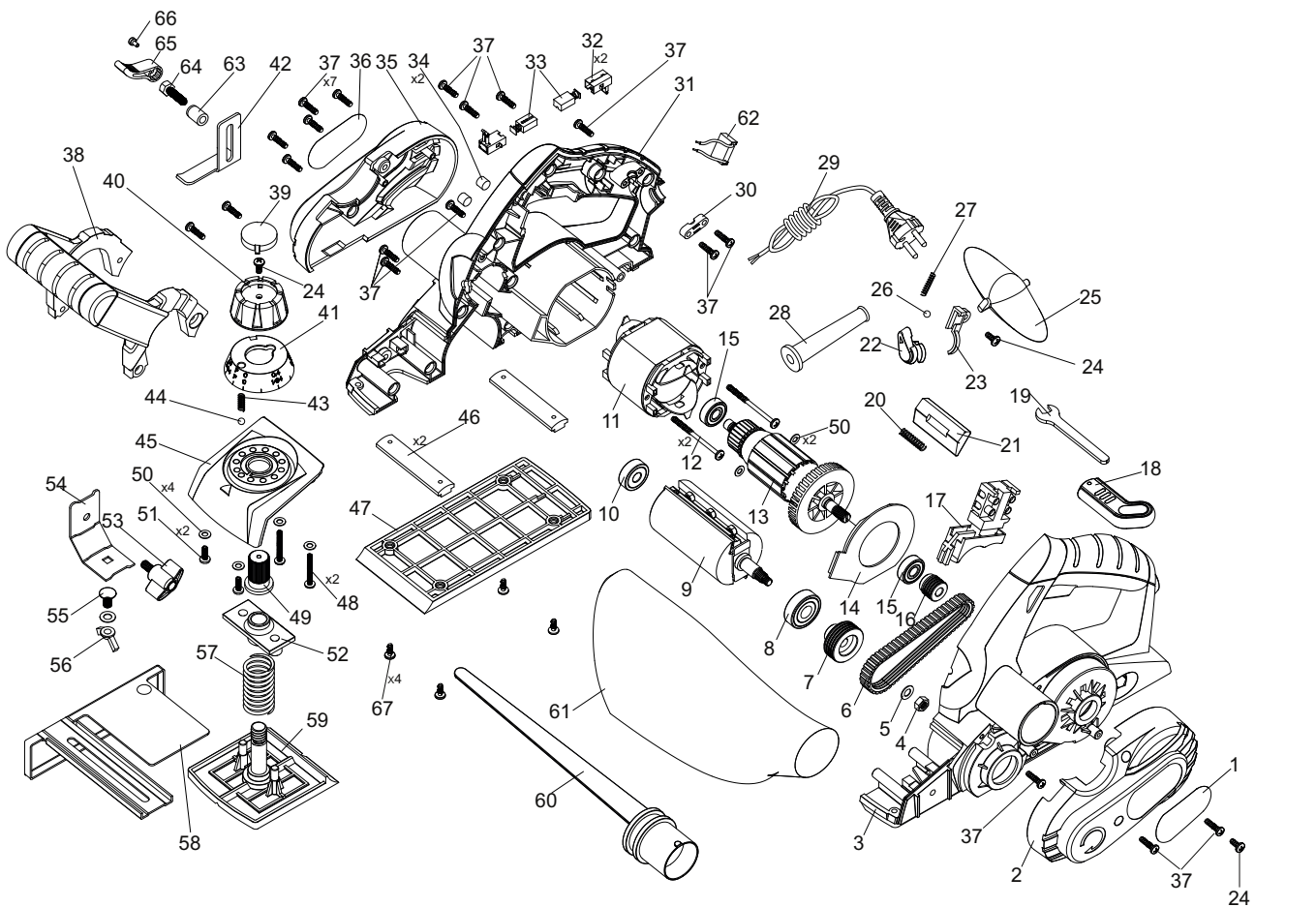


POS. No.	Ref.No.	Description	POS. No.	Ref.No.	Description
----------	---------	-------------	----------	---------	-------------

- 1 181720 Label
- 2 181721 Left Cover
- 3 181722 Left Housing
- 4 181723 Screw
- 5 181724 Flat Washer
- 6 181725 Driving Belt
- 7 181726 Belt pulley
- 8 181727 Bearing
- 9 181728 Cutter
- 10 181729 Bearing
- 11 181730 Stator
- 12 181731 Tapping screw
- 13 181732 Rotator
- 14 181733 Air Deflector
- 15 181734 Bearing
- 16 181735 Belt pulley
- 17 181736 Switch
- 18 181737 Wrench box
- 19 181738 Wrench
- 20 181739 Spring
- 21 181740 Spring handspike
- 22 181741 Lever
- 23 181742 Spring bracket
- 24 181743 Tapping screw
- 25 181744 Dust adjustment
- 26 181745 Steel ball
- 27 181746 Steel ball spring
- 28 181747 Cable cover
- 29 181748 Cable
- 30 181749 Cable Clamp
- 31 181750 Right Housing
- 32 181751 Brush Holder
- 33 181752 Brush

- 34 181753 Brush Lining
- 35 181754 Right Cover
- 36 181755 Label
- 37 181756 Tapping screw
- 38 181757 Front handle
- 39 181758 Knob Cover
- 40 181759 Cutting Depth Adjuster
- 41 181760 Graduation Ring
- 42 181761 Depth ruler
- 43 181762 Steel ball spring
- 44 181763 Steel ball
- 45 181764 Fixing panel
- 46 181765 Slat
- 47 181766 Base
- 48 181767 Phillips screw
- 49 181768 Nut cover
- 50 181769 Flat Washer
- 51 181770 Phillips screw
- 52 181771 Adjust bracket
- 53 181772 Knob
- 54 181773 Fixed bracket
- 55 181774 Bolt
- 56 181775 Wing nut
- 57 181776 Adjust spring
- 58 181777 Cutting Width Guide
- 59 181778 Adjust Plate
- 60 181779 Dust extraction port
- 61 181780 Dust bag
- 62 181781 Capacitance
- 63 181782 Bushing
- 64 181783 Screw
- 65 181784 Knob
- 66 181785 Screw



181786

181787